

Woodland Place Apartments

4957 Woodland Ave., West Des Moines, Iowa

1 & 2
bedroom
apartments

Office
4957 Woodland
#39

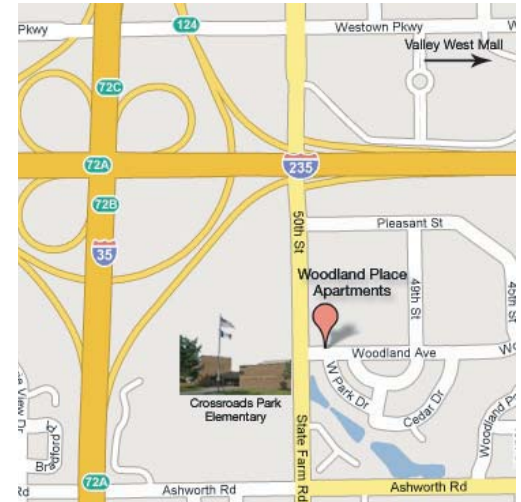


Amenities

- 1 BR/1BA from 598 sq. ft. (rent from \$600)
- 2 BR/1BA from 714 sq. ft. (rent from \$635)
- Updated interiors & appliances
- Some with microwaves
- Ceiling fans
- Cable ready
- Additional storage option
- Patio or balcony
- Laundry in each building
- Water, sewer & trash provided
- Controlled access entries
- Playground

Location

- Immediate access to I-235
- Across from Crossroads Park Elementary School
- Minutes to restaurants, entertainment and both Valley West and Jordan Creek Mall



Affordable apartments in the heart of West Des Moines



contact information

Deb & Howard Gaster

Managers

direct 515 222 0495

fax 515 309 4040

dgaster@ruhlcommercial.com

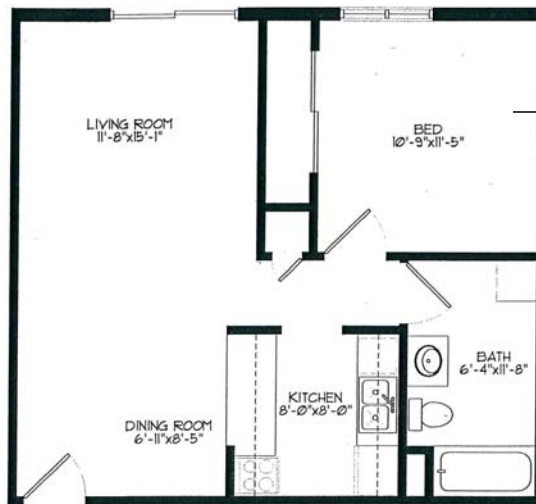
www.ruhldsm.com

Woodland Place Apartments

4957 Woodland Ave., West Des Moines, Iowa

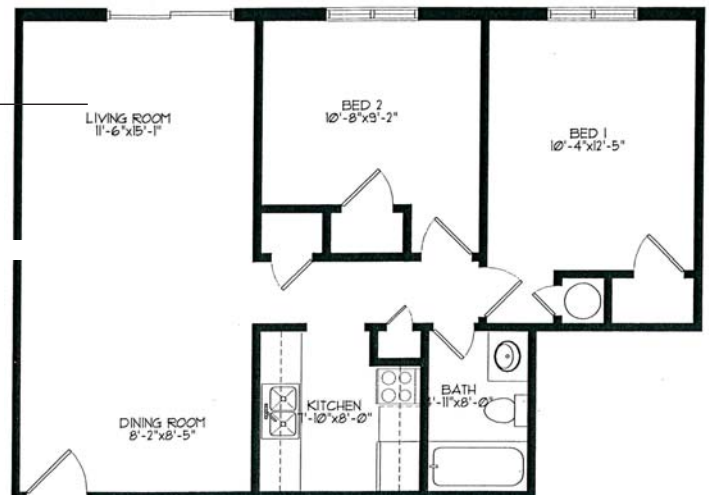
1 & 2
bedroom
apartments

Office
4957 Woodland
#39



One Bedroom Floor Plan
Approximately 598 SF

Two Bedroom Floor Plan
Approximately 714 SF



Two Bedroom Floor Plan
Approximately 778 SF

